

# Hypermethylation of dihydrofolate reductase promoter increases the risk of hypertension in Chinese

Guodong Xu<sup>1,2</sup>, Zhiyi Wang<sup>2</sup>, Lian Li<sup>2</sup>, Wenxia Li<sup>2</sup>, Jingcen Hu<sup>2</sup>, Shuyu Wang<sup>2</sup>, Hongxia Deng<sup>3</sup>, Bo Li<sup>4</sup>, Changyi Wang<sup>4</sup>, Zhishen Shen<sup>3</sup>, Liyuan Han<sup>5,6</sup>

<sup>1</sup>Medical Record Statistics Room, Ningbo Medical Center Lihuli Hospital, Ningbo, Zhejiang, PR China, <sup>2</sup>Department of Preventive Medicine, Zhejiang Provincial Key Laboratory of Pathophysiology, School of Medicine, Ningbo University, Ningbo, Zhejiang, China, <sup>3</sup>Department of Otorhinolaryngology Head and Neck Surgery, Ningbo Medical Center Lihuli Hospital, Ningbo, Zhejiang, China, <sup>4</sup>Department of Non-Communicable Disease Prevention and Control, Shenzhen Nanshan Center for Chronic Disease Control, Shenzhen, Guangdong, China, <sup>5</sup>Hwa Mei Hospital, University of Chinese Academy of Sciences, Ningbo, Zhejiang, PR China, <sup>6</sup>Department of Global Health, Ningbo Institute of Life and Health Industry, University of Chinese Academy of Sciences, Ningbo, Zhejiang, PR China

**Background:** DNA methylation was considered to play an important role in hypertension. However, the direct association between dihydrofolate reductase (*DHFR*) promoter methylation and hypertension remains unclear. We thus aimed to investigate the relationship between DNA methylation of *DHFR* promoter and hypertension. **Materials and Methods:** A total of 371 hypertensive patients (diastolic blood pressure  $\geq 90$  mmHg and/or systolic blood pressure  $\geq 140$  mmHg or a history of antihypertensive treatment) and 320 age- and sex-matched healthy controls from the Hypertension Management Information System in Nanshan Community Health Service Centers were included in this case-control study. Quantitative methylation-specific polymerase chain reaction was used to measure the level of *DHFR* promoter methylation, which was presented as the percentage of methylated reference (PMR). A multivariate logistic regression model was used to explore the risk of *DHFR* promoter methylation. **Results:** Our results indicated that the level of *DHFR* promoter methylation was higher in hypertensive patients (median PMR, 34.32%; interquartile range, 11.34–119.60) than in healthy controls (median PMR, 18.45%; interquartile range, 8.16–35.40) ( $P < 0.001$ ). Multivariable analysis showed that the risk of *DHFR* promoter hypermethylation was significantly higher in hypertensive patients than in healthy controls (odds ratio = 3.94, 95% confidence interval = 2.56–6.02,  $P < 0.001$ ). Furthermore, hypermethylation was positively associated with sex, high blood homocysteine levels, and alcohol drinking. In particular, the area under the receiver operating characteristic curve was 0.688 (0.585–0.668) for the male hypertensive patients, suggesting the potential diagnostic value of *DHFR* promoter methylation in male hypertension. **Conclusion:** Our results demonstrated that *DHFR* promoter hypermethylation is positively associated with the risk of hypertension in Chinese.

**Key words:** Dihydrofolate reductase, hypermethylation, hypertension

**How to cite this article:** Xu G, Wang Z, Li L, Li W, Hu J, Wang S, *et al.* Hypermethylation of dihydrofolate reductase promoter increases the risk of hypertension in Chinese. *J Res Med Sci* 2020;25:117.

## INTRODUCTION

Hypertension is a major public health burden, and about 31.1% of world's adults had hypertension.<sup>[1]</sup> According to the Results from the China Hypertension Survey (2012–2015), 23.2% of Chinese adults had

hypertension and 41.3% had prehypertension,<sup>[2]</sup> indicating that the burden of hypertension is also very high in China. Hypertension is influenced by susceptibility genes, environmental factors, and their complex interactions.<sup>[3,4]</sup> Epigenetic modifications, which provide a link between environment and gene expression, are known to be involved in the development

### Access this article online

Quick Response Code:



Website:

www.jmsjournal.net

DOI:

10.4103/jrms.JRMS\_895\_19

This is an open access journal, and articles are distributed under the terms of the Creative Commons Attribution-NonCommercial-ShareAlike 4.0 License, which allows others to remix, tweak, and build upon the work non-commercially, as long as appropriate credit is given and the new creations are licensed under the identical terms.

**For reprints contact:** WKHLRPMedknow\_reprints@wolterskluwer.com

**Address for correspondence:** Dr. Liyuan Han, Hwa Mei Hospital, University of Chinese Academy of Sciences, Ningbo, Zhejiang, PR China.

E-mail: hanliyuan@nbu.edu.cn

Dr. Zhisen Shen, Ningbo Medical Center Lihuli Hospital, Ningbo, Zhejiang, China. E-mail: szs7216@163.com

**Submitted:** 13-Jan-2020; **Revised:** 03-Mar-2020; **Accepted:** 15-Jul-2020; **Published:** 30-Dec-2020

of hypertension via several mechanisms.<sup>[5]</sup> For example, DNA methylation, one of the most common epigenetic modifications, usually occurs at CpG dinucleotides in mammals.<sup>[6]</sup> DNA methyltransferase transfers a methyl group to cytosine nucleotides on the promoter, likely leading to the transcriptional silencing of gene expression.<sup>[7]</sup> Compelling evidence has indicated that aberrant DNA methylation of the *ADD1*,<sup>[8]</sup> *GCK*,<sup>[9]</sup> and *SHMT1*<sup>[10]</sup> genes contributes to the risk of hypertension.

Hyperhomocysteinemia is a well-known risk factor for hypertension.<sup>[11]</sup> Dihydrofolate reductase (*DHFR*) enzyme is a cytosolic protein of 21.3 kDa, and nicotinamide adenine dinucleotide phosphate is required as its coenzyme.<sup>[12]</sup> *DHFR* converts folate derivatives to dihydrofolate and then to tetrahydrofolate (THF). Eventually, via catalysis by the enzyme methylene tetrahydrofolate reductase (*MTHFR*), THF is converted to 5-methyl tetrahydrofolate (5-MTHF), which provides a methyl group to homocysteine and influences its metabolism. The variations in the noncoding regions of the *DHFR* gene affect the blood homocysteine (Hcy) levels: deletion of a 19-bp region in intron 1 can decrease Hcy levels, while variation in a 9-bp repeat in the CpG island may also lead to changes in Hcy levels.<sup>[13]</sup> However, the direct association between *DHFR* promoter methylation and hypertension or Hcy levels remains unclear. Thus, we aimed to investigate the contribution of *DHFR* promoter methylation to the occurrence of hypertension in a Chinese population.

## MATERIALS AND METHODS

### Subjects

In total, 371 hypertensive patients were recruited from December 2018 to August 2019, all of whom were local residents of Shenzhen (living in Shenzhen for at least half a year) registered in the Hypertension Management Information System in Nanshan Community Health Service

Centers [Figure 1]. In addition, 320 age-matched ( $\pm 3$  years) and sex-matched healthy controls were also recruited from the same communities. The data collection of the participants was carried out simultaneously. According to the present sample size, we used the formula:  $n = (1 + 1/c) \cdot q \cdot p / (\alpha + U\beta)^2 / (p_1 - p_0)^2$ , where  $\alpha = 0.05$  and  $c = 0.863$ , and the power of this case-control study was 91%, the  $\beta$  value was 0.09. The diagnostic criteria for hypertension were diastolic blood pressure (DBP)  $\geq 90$  mmHg and/or systolic blood pressure (SBP)  $\geq 140$  mmHg or a history of antihypertensive treatment. Furthermore, individuals with a history of liver or renal insufficiency, secondary hypertension, cancer, or other serious diseases or who previously took folic acid, Vitamin B6, or Vitamin B12, which can directly influence Hcy levels, were excluded. This study was approved by the ethics committee of the Shenzhen Nanshan Center for Chronic Disease Control. Informed written consent was obtained from all participants (1120170008).

### Physical examination

Physical examination included height, weight, waist-hip ratio, and SBP and DBP measurements. Mercury sphygmomanometers were used to measure the participants' blood pressure on their right arm after 5 min of sitting. Inextensible anthropometric tapes were used to measure the waist and hip circumferences. All physical examinations were performed by professional medical staff.

### Biochemical measurements

After the participants were fasted for 12 h, their blood samples were collected in EDTA anticoagulant tubes and were immediately transported to the laboratory in a cryogenic sampling chamber for further investigations or stored at  $-80^\circ\text{C}$  in an ultra-low temperature freezer. The plasma levels of fasting blood Hcy, uric acid, triglyceride, total cholesterol, low-density lipoprotein (LDL), and glucose (Glu) were measured using an automatic biochemical analyzer (HITACHI 7080, Tokyo, Japan).

### Detection of DNA methylation levels

SYBR green-based quantitative methylation-specific polymerase chain reaction (qMSP) was used to measure the level of *DHFR* promoter methylation. The DNA extraction, bisulfite DNA modification, and qMSP procedures were followed as described in previous studies.<sup>[14,15]</sup> The following primers were used for qMSP of the *DHFR* promoter: forward, 5'-TATTTGAGCGGTGGTTAG-3' and reverse, 5'-TCTACTATAACGAACGAACACTC-3'. The thermal cycling conditions were one initial denaturation step at  $95^\circ\text{C}$  for 10 min, followed by 45 cycles of denaturation at  $95^\circ\text{C}$  for 20 s, annealing at  $56^\circ\text{C}$  for 45 s, and extension at  $72^\circ\text{C}$  for 20 s. A melting curve analysis was performed under the following conditions: holding at

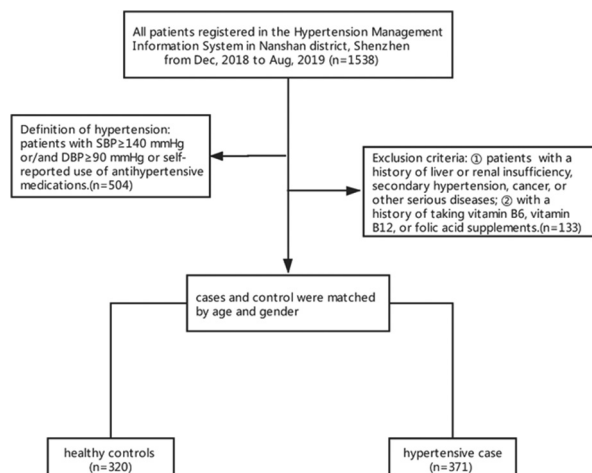


Figure 1: The study flowchart

95°C for 15 s, cooling to 60°C for 60 s, and slowly heating to 95°C at the rate of 0.11°C/s. The percentage of methylated reference (PMR) was used to represent the level of DHFR promoter methylation.

### Statistical analysis

The differences in normal distribution continuous and categorical variables between the hypertensive patients and healthy controls were examined by the *t*-test and Chi-square test, respectively. The levels of DHFR promoter methylation are skewed distribution and expressed as the median (interquartile range), and comparison between the levels was performed using the Mann–Whitney U-test. In addition, the Chi-square test was used to explore the relationship between the DHFR promoter methylation and clinical characteristics, and DHFR methylation was divided into hypermethylation and hypomethylation based on the cutoff value of the receiver operating characteristic (ROC) curve. A multivariate logistic regression analysis model was used to determine the relationship between the level of DHFR methylation and the risk of hypertension after adjusting for potential confounding variables. In addition, the area under the ROC curve (AUC) was used to evaluate the diagnostic value of DHFR methylation for hypertension. The multiple imputation method was used to impute the missing data. All statistical analyses were performed using PASW Statistics version 18.0 (IBM SPSS Statistics, ARMONK, USA), and a two-sided *P* < 0.05 was considered as statistically significant.

## RESULTS

### Characteristics of cases and controls

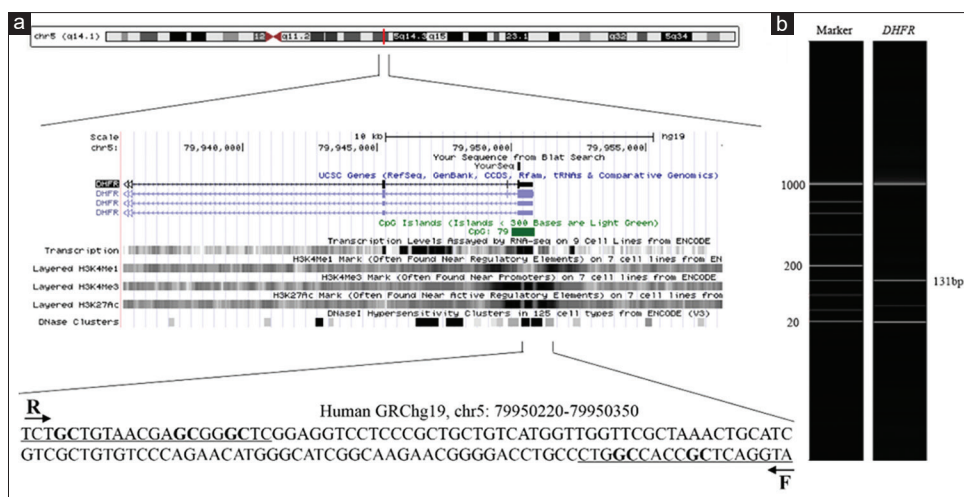
In total, 371 hypertensive patients and 320 age- and sex-matched healthy controls were recruited in the present study. The baseline study flowchart of the patients and controls are shown in Table 1. Figure 2a shows the DHFR

promoter assay used to determine DHFR methylation levels. Figure 2b shows the quality of extractive DNA assay and bisulfite conversion. Significantly higher body mass index (BMI), plasma Glu levels, SBP, and DBP were observed in hypertensive patients than in healthy controls (all *P* < 0.001), whereas the LDL levels were lower in hypertensive patients than in healthy controls (*P* < 0.001). The DHFR methylation levels (median [interquartile range]) were significantly higher in hypertensive patients (34.32% [11.34%–119.60%]) than in healthy controls (18.45% [8.16%–35.40%]) (*P* < 0.001). The Hcy levels were also higher in hypertensive patients than in healthy controls (16.49 ± 11.40 μmol/L vs. 14.34 ± 5.97 μmol/L, *P* = 0.001).

**Table 1: Characteristics of cases and controls**

	Healthy controls	Hypertensive cases	t/χ <sup>2</sup>	P
Age (years)	65.39±9.14	66.39±9.27	-1.45	0.148
Gender (men/women)	165/155	205/166	0.94	0.332
BMI (kg/m <sup>2</sup> )	23.51±3.09	24.36±2.95	-3.77	<0.001
WHR	0.91±0.10	0.91±0.10	-1.25	0.212
SBP (mmHg)	123.90±13.83	134.00±16.26	-8.91	<0.001
DBP (mmHg)	77.38±8.50	82.45±10.93	-6.87	<0.001
Hcy (μmol/L)	14.34±5.97	16.49±11.40	-3.11	0.001
UA (μmol/L)	360.48±90.67	357.39±95.75	0.44	0.658
TG (mmol/L)	1.83±1.47	1.90±1.50	-0.59	0.556
TC (mmol/L)	5.11±0.98	5.12±0.99	-0.13	0.893
LDL (mmol/L)	3.19±0.76	2.98±0.75	3.67	<0.001
Glu (mmol/L)	5.05±1.28	5.65±1.28	-6.33	<0.001
Smoking (no/yes)	273/47	332/39	2.75	0.097
Drinking (no/yes)	206/114	234/137	0.13	0.730
PMR-DHFR (%)	18.45 (8.16–35.40)	34.32 (11.34–119.60)	-6.03	<0.001

WHR=Waist-hip ratio; Hcy=Plasma homocysteine; UA=Uric acid; TG=Triglyceride; TC=Total cholesterol; LDL=Low-density lipoprotein; Glu=Blood glucose; BMI=Body mass index; SBP=Systolic blood pressure; DBP=Diastolic blood pressure; PMR=Percentage of methylated reference; DHFR=Dihydrofolate reductase



**Figure 2:** Methylation assay of dihydrofolate reductase gene and its quality control.<sup>[7]</sup> (a) The target sequence is located on the CpG island of dihydrofolate reductase gene (location). F = Forward primer; R = Reverse primer. (b) The fragment length of MSP product is 131 bp

### Association between promoter methylation of dihydrofolate reductase and hypertension and baseline characteristics

As shown in Table 2, the adjusted risk of DHFR promoter hypermethylation was significantly higher in hypertensive patients than in healthy controls (odds ratio [OR] =3.94, 95% confidence interval [CI] =2.56–6.02). Men showed a higher risk of hypermethylation than women (OR = 1.78, 95% CI = 1.36–2.33). Individuals with Hcy levels >15 mmol/L and alcohol drinkers also exhibited a higher risk of hypermethylation (OR = 1.27, 95% CI = 1.00–1.60 and OR = 1.66, 95% CI = 1.04–2.64, respectively). However, the risk of DHFR promoter methylation was not associated with age, BMI, and LDL levels [Table 2].

### Diagnostic value of dihydrofolate reductase methylation in hypertension

AUC values were used to indicate the diagnostic value of DHFR promoter methylation levels for hypertension. The AUC value was 0.628 (0.585–0.668) in total, 0.688 (0.625–0.737) in men, and 0.545 (0.488–0.613) in women [Figure 3].

### DISCUSSION

Our matched case–control study revealed that DHFR promoter hypermethylation increased the risk of hypertension. DHFR enzyme plays an important role in Hcy metabolism. Hyperhomocysteinemia is a well-known risk factor for hypertension.<sup>[11]</sup> In a previous study, hyperhomocysteinemia was found to increase the risk of

hypertension by approximately 36%.<sup>[16]</sup> A high level of DHFR promoter methylation may reduce the expression of DHFR enzyme,<sup>[7]</sup> thereby contributing to the decrease in 5-MTHF levels. As a methyl donor of Hcy metabolism, the decrease in 5-MTHF levels leads to significant accumulation of Hcy, further increasing the risk of hypertension. In the present study, after adjusted age, gender, BMI, LDL, and drinking status, we also found that DHFR promoter hypermethylation associated with high Hcy levels (OR = 1.27), suggesting that DHFR promoter hypermethylation results in hypertension by increasing the Hcy levels in Chinese.

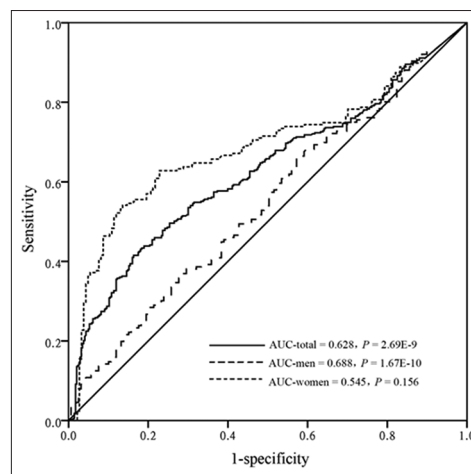


Figure 3: Receiver operation characteristics curve of dihydrofolate reductase methylation in hypertension

Table 2: Association between promoter methylation of dihydrofolate reductase and hypertension and baseline characteristics

	n	Hypomethylation	Hypermethylation	OR (95% CI)	P
Case	371	214	157	3.94 (2.56–6.02)*	<0.001
Control	320	269	51		
Gender					
Men	205	97	108	1.78 (1.36–2.33)	<0.001
Women	166	117	49		
Age (years)					
>65	232	129	103	1.26 (0.82–1.93)	0.295
≤65	139	85	54		
BMI (kg/m <sup>2</sup> )					
>24	203	115	88	1.10 (0.73–1.66)	0.658
≤24	168	99	69		
Hcy (mmol/L)					
>15	166	86	80	1.27 (1.00–1.60)	0.049
≤15	205	127	78		
LDL (mmol/L)					
>3.12	165	101	64	0.77 (0.51–1.17)	0.218
≤3.12	206	113	93		
Drinking					
Yes	97	47	50	1.66 (1.04–2.64)	0.032
No	274	167	107		

\*Adjusted for age, gender, BMI, Hcy, LDL, drinking. The methylation level of DHFR≥51.08% was considered as hypermethylation and <51.08% was considered as hypomethylation. BMI=Body mass index; Hcy=Plasma homocysteine; LDL=Low-density lipoprotein; DHFR=Dihydrofolate reductase; OR=Odds ratio; CI=Confidence interval



We observed that men are more likely to have higher *DHFR* methylation levels and the diagnostic value is higher in men. A possible explanation for this phenomenon is the effects of sex hormones.<sup>[17]</sup> The DNA methylation level is influenced by sex hormones. Estrogen has been found to increase the *DHFR* gene expression in methotrexate-resistant human breast cancer cells.<sup>[18]</sup> Blood pressure is also affected by sex hormones. For example, estrogen reduces blood pressure by binding to estrogen receptor alpha expressed by the medial amygdala neurons,<sup>[19]</sup> and testosterone elevates blood pressure through the renin–angiotensin–aldosterone system.<sup>[20,21]</sup> Thus, we speculate that the presence of sex hormones interferes with the effect of *DHFR* promoter methylation on blood pressure, but this needs to be evaluated in further studies.

In one study, alcohol consumption was found to increase the level of global DNA methylation.<sup>[22]</sup> Consistent with that study, we also found that alcohol consumption increased the risk of hypermethylation, thus contributing to hypertension. Alcohol can be viewed as a drug or a potentially poisonous solvent, in which case, the relationship of hypermethylation and alcohol consumption could be explained as the graded cellular responses to an exogenous toxin.<sup>[23]</sup>

To the best of our knowledge, this was the first study to evaluate the association between *DHFR* promoter methylation and hypertension in a matched case–control study. However, the following limitations should be noted. First, the participants included in our study were limited to the residents of Shenzhen, which may limit the generalizability of our findings. Second, several genes, such as *MTHFR*, *MS*, and *MTRR*,<sup>[24]</sup> are involved in Hcy metabolism but were not investigated in this study; thus, methylation of other genes needs to be investigated in future studies. Third, we did not investigate other mechanisms of epigenetic regulation, such as histone modification and miRNA action, which also contribute to gene expression; thus, further studies are warranted to explore other mechanisms of epigenetic regulation in relation to hypertension. At last, antihypertensive drugs could inevitably affect the level of gene methylation expression.

## CONCLUSION

Our matched case–control study suggested that hypermethylation of *DHFR* promoter increased the risk of hypertension, especially in males. The *DHFR* promoter methylation may serve as an indicator for the diagnosis of hypertension. To prevent hypertension, more attention needs to be paid to changes in the methylation levels.

## Acknowledgment

This work was supported by the National Key R and D Program of China (Grant No. 2017YFC1310902,

2018YFC1315305), the Ningbo Health Branding Subject Fund (Grant No. PPXK2018-02), and the Sanming Project of Medicine in Shenzhen (Grant No. SZSM201803080).

## Financial support and sponsorship

This work was supported by the National Key R and D Program of China (Grant No. 2017YFC1310902, 2018YFC1315305), the Ningbo Health Branding Subject Fund (Grant No. PPXK2018-02), the Sanming Project of Medicine in Shenzhen (Grant No. SZSM201803080). Major Program of Social Development of Ningbo Science and Technology Bureau (Grant No. 2019C50094), and Natural Science Foundation of Ningbo Municipality, China (Grant No. 2016A610169).

## Conflicts of interest

There are no conflicts of interest.

## REFERENCES

- Mills KT, Bundy JD, Kelly TN, Reed JE, Kearney PM, Reynolds K, *et al.* Global disparities of hypertension prevalence and control: A systematic analysis of population-based studies from 90 countries. *Circulation* 2016;134:441-50.
- Wang Z, Chen Z, Zhang L, Wang X, Hao G, Zhang Z, *et al.* Status of hypertension in China: Results from the China Hypertension Survey, 2012-2015. *Circulation* 2018;137:2344-56.
- Zhang X, Zhao H, Zhang J, Han D, Zheng Y, Guo X, *et al.* Gene environment interaction of *GALNT2* and *APOE* gene with hypertension in the Chinese Han population. *Biomed Mater Eng* 2015;26 Suppl 1:S1977-83.
- Egan BM. Collectrin, an X-linked, angiotensin converting enzyme 2 homolog, causes hypertension in a rat strain through gene-gene and gene-environment interactions: Relevance to human hypertension. *Circulation* 2013;128:1727-8.
- Levy E, Spahis S, Bigras JL, Delvin E, Borys JM. The epigenetic machinery in vascular dysfunction and hypertension. *Curr Hypertens Rep* 2017;19:52.
- Ziller MJ, Gu H, Müller F, Donaghey J, Tsai LT, Kohlbacher O, *et al.* Charting a dynamic DNA methylation landscape of the human genome. *Nature* 2013;500:477-81.
- Hu J, Zhu H, Xu G, Chen Z, Li L, Wang S, *et al.* Significant association between *DHFR* promoter methylation and ischemic stroke in a Chinese hypertensive population. *J Clin Lab Anal*. 2020;00:e23322.
- Zhang LN, Liu PP, Wang L, Yuan F, Xu L, Xin Y, *et al.* Lower *ADD1* gene promoter DNA methylation increases the risk of essential hypertension. *PLoS One* 2013;8:e63455.
- Fan R, Wang WJ, Zhong QL, Duan SW, Xu XT, Hao LM, *et al.* Aberrant methylation of the *GCK* gene body is associated with the risk of essential hypertension. *Mol Med Rep* 2015;12:2390-4.
- Xu G, Wang C, Ying X, Kong F, Ji H, Zhao J, *et al.* Serine hydroxymethyltransferase 1 promoter hypermethylation increases the risk of essential hypertension. *J Clin Lab Anal* 2019;33:e22712.
- Sen U, Mishra PK, Tyagi N, Tyagi SC. Homocysteine to hydrogen sulfide or hypertension. *Cell Biochem Biophys* 2010;57:49-58.
- Frye RE, Slattery JC, Quadros EV. Folate metabolism abnormalities in autism: Potential biomarkers. *Biomark Med* 2017;11:687-99.

13. Lin Z, Li Q, Sun Y, Huang J, Wang W, Fu J, *et al.* Interactions between genetic variants involved in the folate metabolic pathway and serum lipid, homocysteine levels on the risk of recurrent spontaneous abortion. *Lipids Health Dis* 2019;18:143.
14. Li B, Chen X, Jiang Y, Yang Y, Zhong J, Zhou C, *et al.* CCL2 promoter hypomethylation is associated with gout risk in Chinese Han male population. *Immunol Lett* 2017;190:15-9.
15. Wang C, Xu G, Wen Q, Peng X, Chen H, Zhang J, *et al.* Significant association of methylenetetrahydrofolate dehydrogenase 1 promoter hypomethylation with stroke in a Chinese population with primary hypertension. *Ann Clin Lab Sci* 2019;49:112-8.
16. Zhong F, Zhuang L, Wang Y, Ma Y. Homocysteine levels and risk of essential hypertension: A meta-analysis of published epidemiological studies. *Clin Exp Hypertens* 2017;39:160-7.
17. Sebag IA, Gillis MA, Calderone A, Kasneci A, Meilleur M, Haddad R, *et al.* Sex hormone control of left ventricular structure/function: Mechanistic insights using echocardiography, expression, and DNA methylation analyses in adult mice. *Am J Physiol Heart Circ Physiol* 2011;301:H1706-15.
18. Teo GY, Rasedee A, Al-Haj NA, Beh CY, How CW, Rahman HS, *et al.* Effect of fetal bovine serum on erythropoietin receptor expression and viability of breast cancer cells. *Saudi J Biol Sci* 2020;27:653-8.
19. Hinton AO Jr., He Y, Xia Y, Xu P, Yang Y, Saito K, *et al.* Estrogen receptor- $\alpha$  in the medial amygdala prevents stress-induced elevations in blood pressure in females. *Hypertension* 2016;67:1321-30.
20. Basaria S, Coviello AD, Travison TG, Storer TW, Farwell WR, Jette AM, *et al.* Adverse events associated with testosterone administration. *N Engl J Med* 2010;363:109-22.
21. Maric-Bilkan C, Manigrasso MB. Sex differences in hypertension: Contribution of the renin-angiotensin system. *Gen Med* 2012;9:287-91.
22. Semmler A, Heese P, Stoffel-Wagner B, Muschler M, Heberlein A, Bigler L, *et al.* Alcohol abuse and cigarette smoking are associated with global DNA hypermethylation: Results from the German Investigation on Neurobiology in Alcoholism (GINA). *Alcohol* 2015;49:97-101.
23. Philibert RA, Plume JM, Gibbons FX, Brody GH, Beach SR. The impact of recent alcohol use on genome wide DNA methylation signatures. *Front Genet* 2012;3:54.
24. Lima A, Bernardes M, Azevedo R, Seabra V, Medeiros R. Moving toward personalized medicine in rheumatoid arthritis: SNPs in methotrexate intracellular pathways are associated with methotrexate therapeutic outcome. *Pharmacogenomics* 2016;17:1649-74.